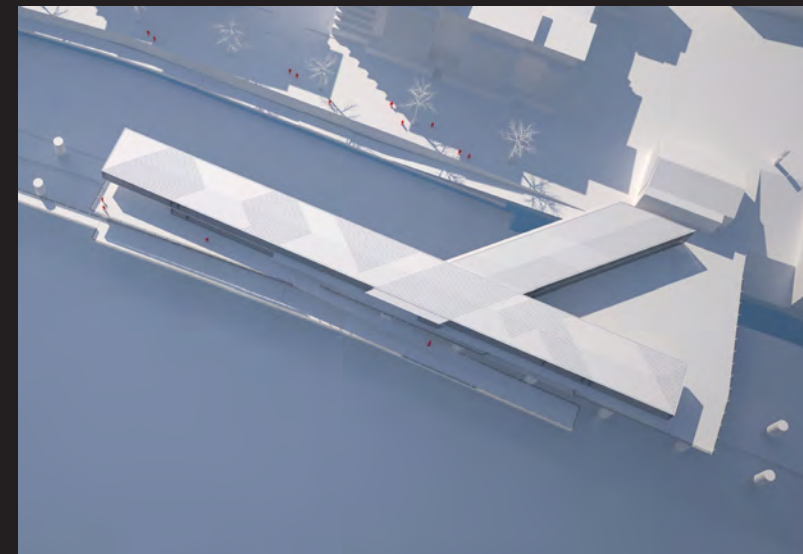
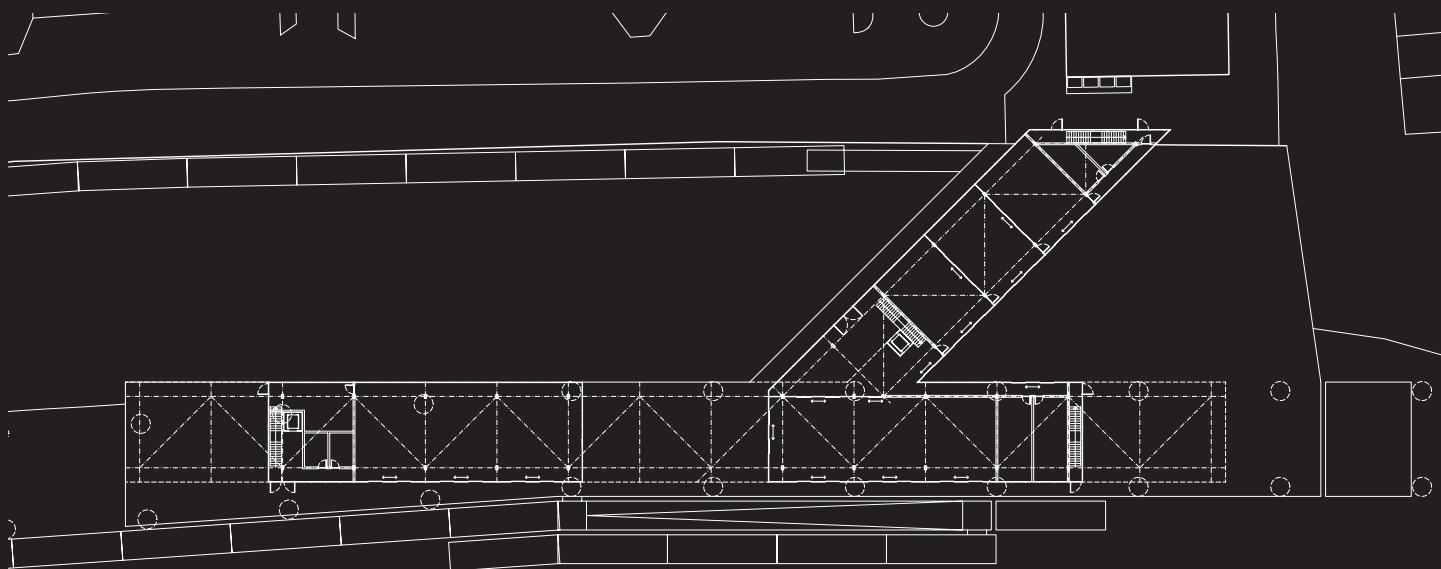
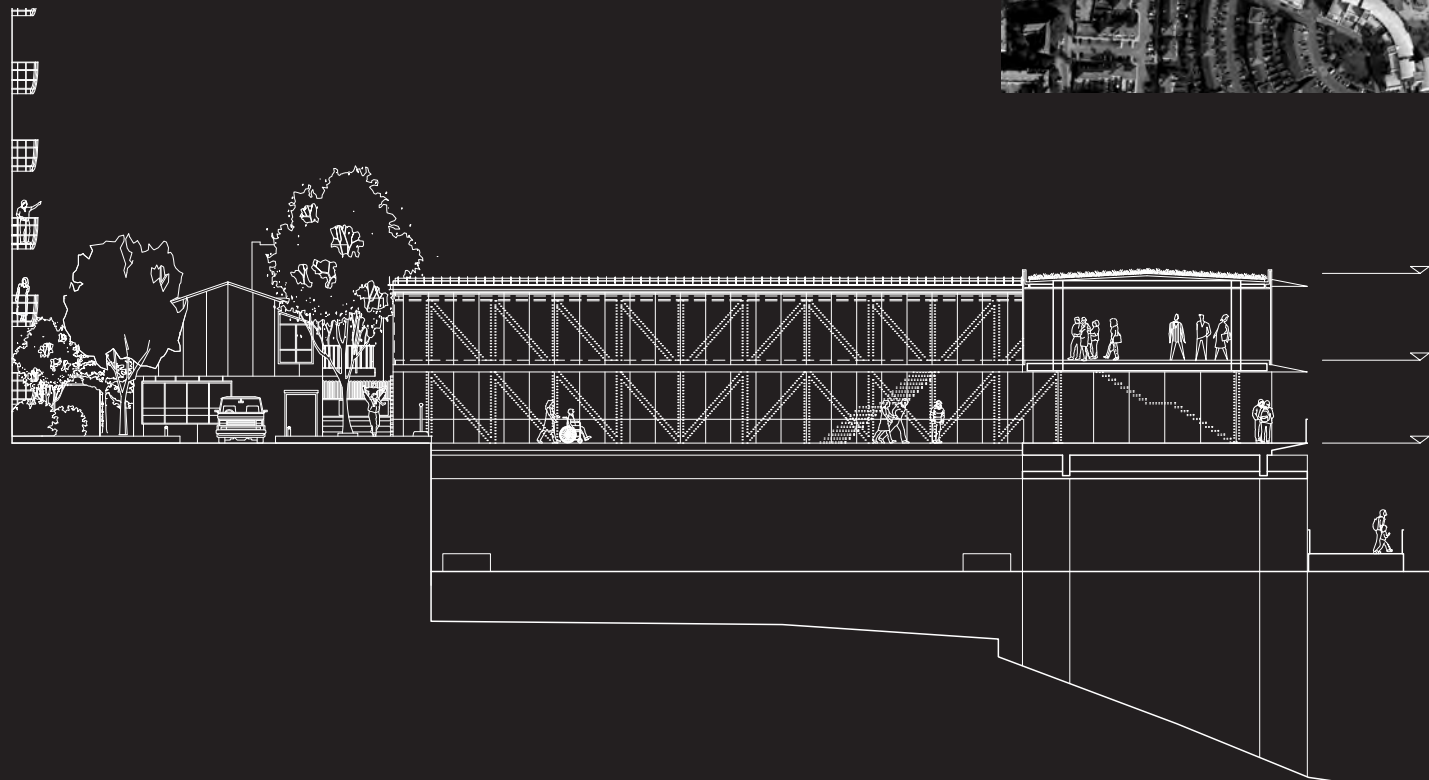


The Ahoy Centre is a charity which provides and teaches sailing and other river related activities, especially to people with disabilities and disadvantaged youth. The new 2-storey building will be situated on the adjacent disused coal jetty. It will include teaching and workshop facilities, communal spaces, a floating marine exhibition and mooring for houseboats and tall ships.

Presently, the area where Ahoy Centre resides is surrounded and dominated by residential areas but greatly lacks facilities required to support the growing communities nearby. To address this issue, a local landmark run by the community, for the community, is urgently needed to create an engaging focal point.

Client: AHOY Centre
Date: 2008
Status: Feasibility
Value: £7m



4

2

3



5

Illustrations

- 1/ The site on the river Thames at Greenwich, SE London
- 2/ Sectional elevation through the new jetty accommodation
- 3/ Upper level plan of the new jetty
- 4/ Aerial perspective
- 5/ Tall ship moored at the jetty