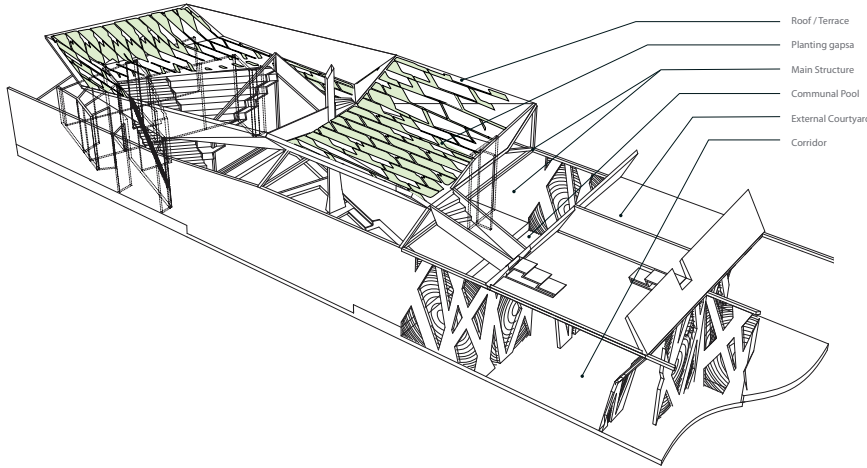


Beauvallon Hostellerie, St Maxime, France

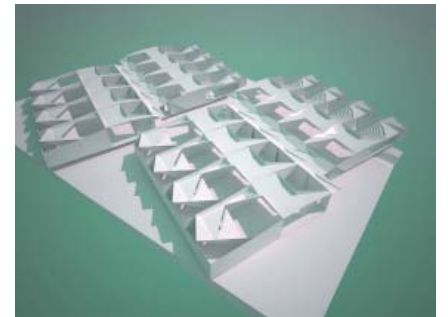
The project adjacent to the Beauvallon Hotel consists of 16 units connected with a communal pool on the upper level and a corridor on the ground level. 2 bedrooms and living areas are arranged around internal courtyard and an internal pool. Stairs slice through the bedroom component to provide expansive views to the sky with access to an elevated terrace. Based on a North African model developed and tested over centuries, the section uses a central courtyard to cool and distribute fresh air. A pool of water at the heart of the building evaporates in the heat of summer generating cool water vapour which is pulled through the living and sleeping spaces by the external perimeter warm courts. In mid seasonal climates the lower sun is allowed into the internal courts above carefully profiled side walls to warm the interior.



single unit
overview



Client: Parkview International
 Status: planning



arrangement of suites
superstructure/in-situ and off-site fabrication



bird's eye view with the communal pool
private pool of the suite

