

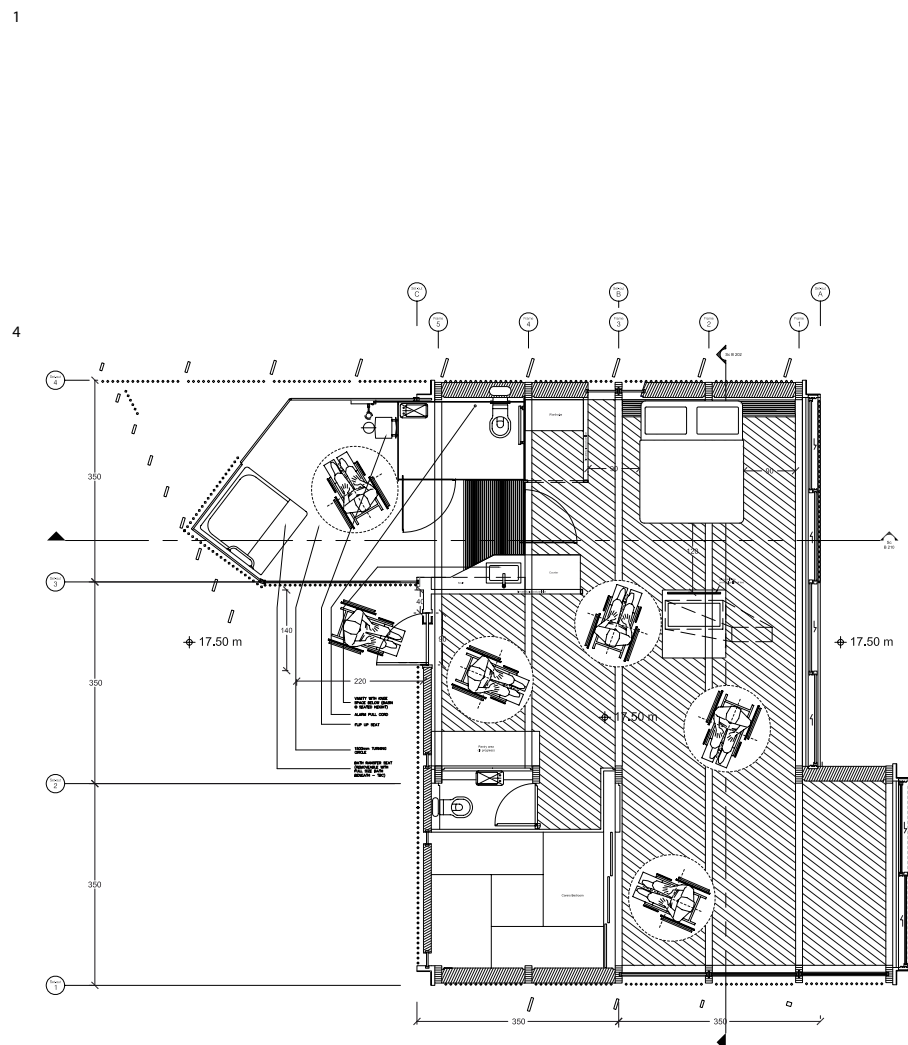
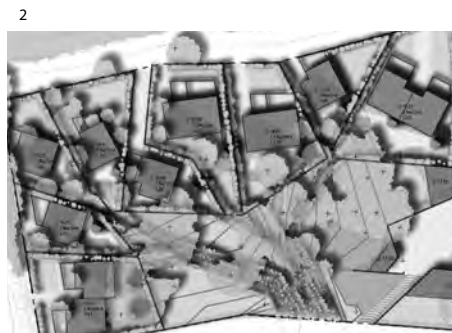
01
Description

033.0/
Beauvallon Spa

The project in the garden of the Beauvallon Hotel comprises of 9 individual suites and a communal spa building.

Client: Parkview International
Date: 2008
Status: Planning
Value: £7m

The ecologic timber constructions has a roof of solar evacuated tubes which creates shade for the guest suites and heats the water for the spa facilities. The buildings have been placed in the landscape according to self organised natural growth patterns resulting in a dense yet spacious distribution.



Illustrations

- 1/ Site model showing the relationship to the existing hotel
- 2/ Site plan
- 3/ Interior perspective
- 4/ Typical suite floor plan
- 5/ Individual suite with private court and pool