

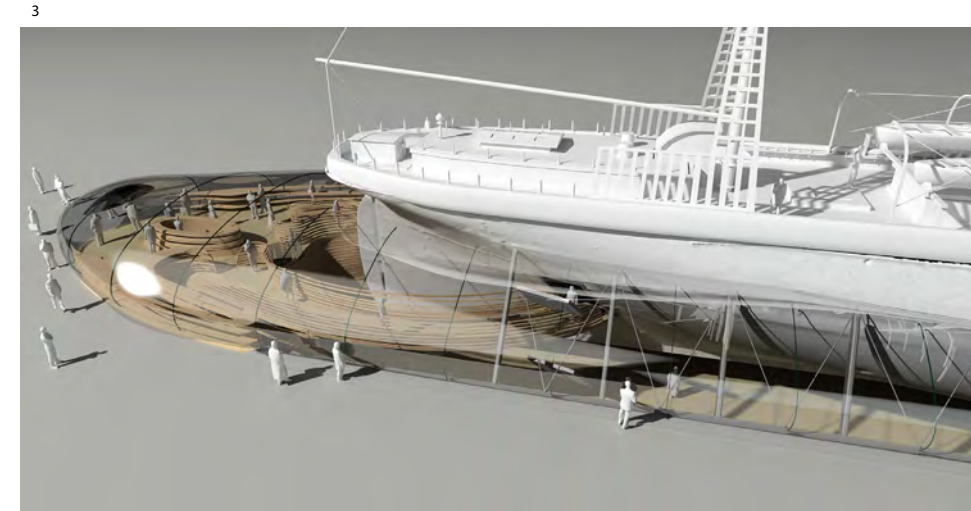
Cutty Sark was constructed in 1869, the last remaining Extreme Clipper she displaces 900 tonnes.

We have devised a structural mechanism that lifts the hull above the dry berth in which she currently resides, generating 1000m² of space to house a new museum.

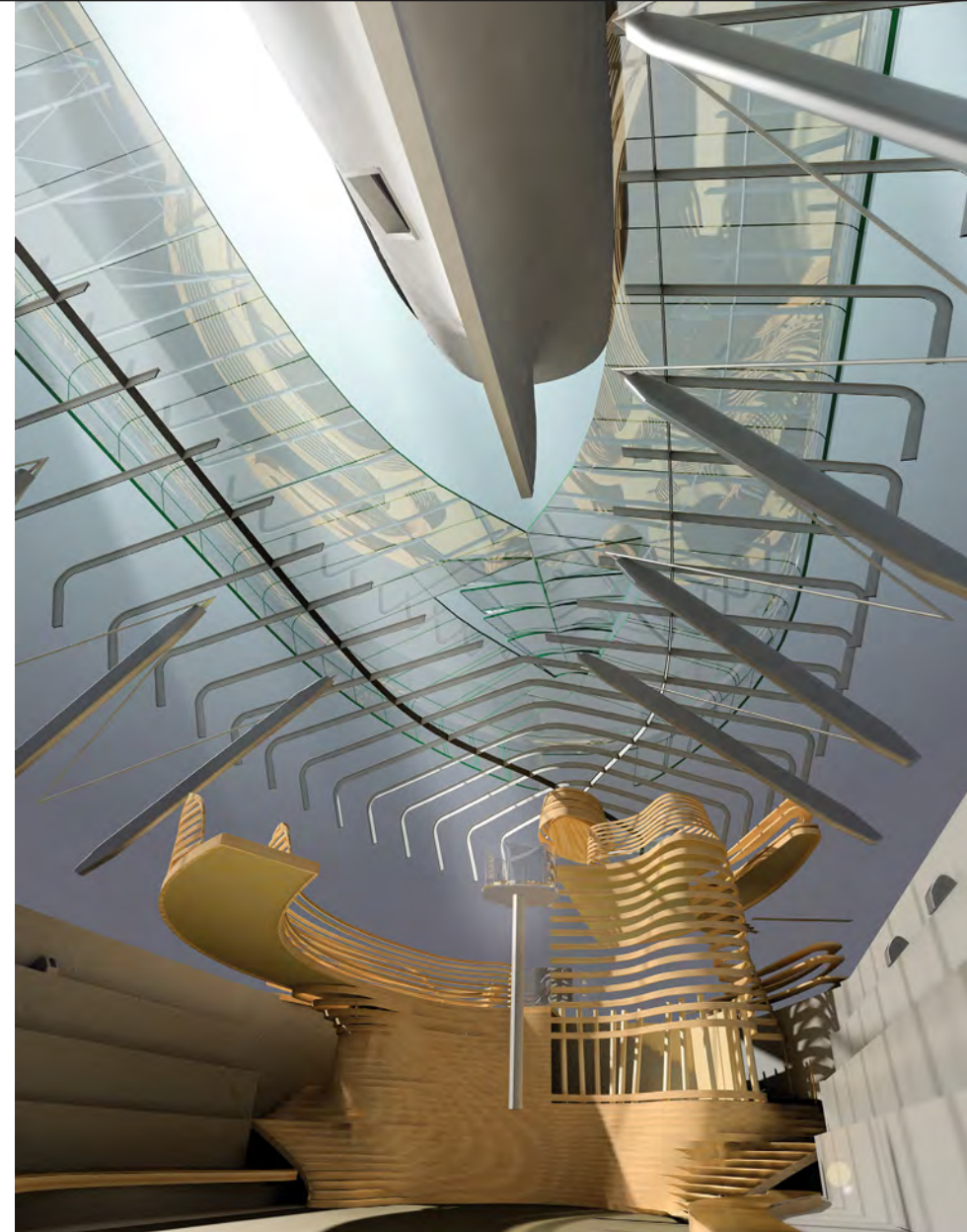
The support, a combination of steel members cradles the hull, allowing the composite timber and iron structure to retain its original form, a shape that is the key to her speed.



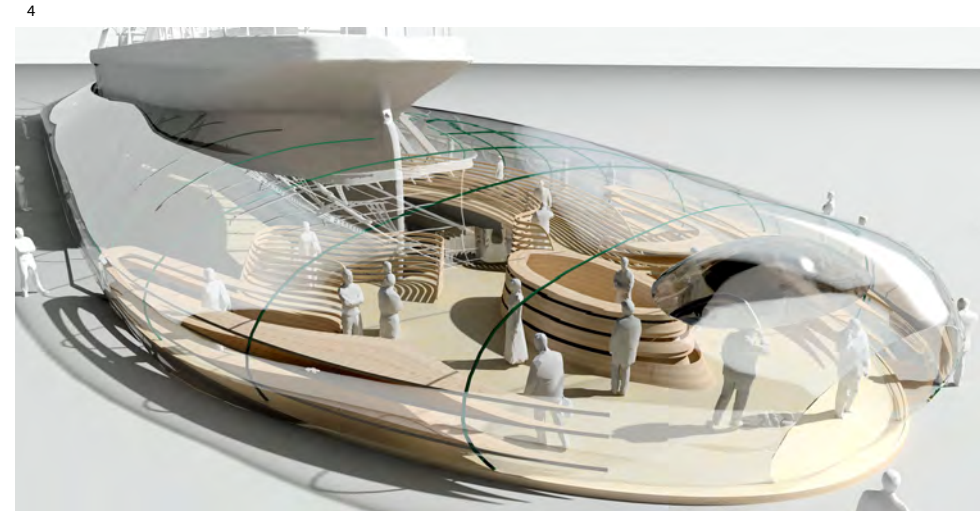
2



3



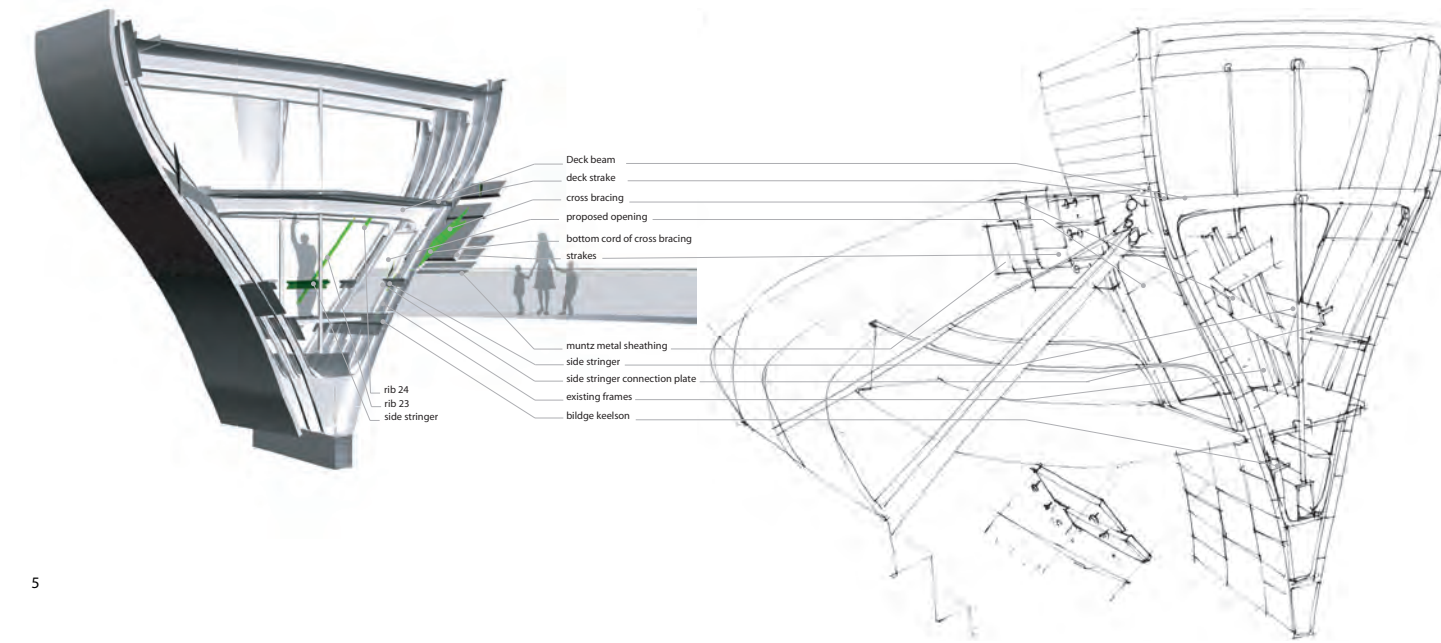
1



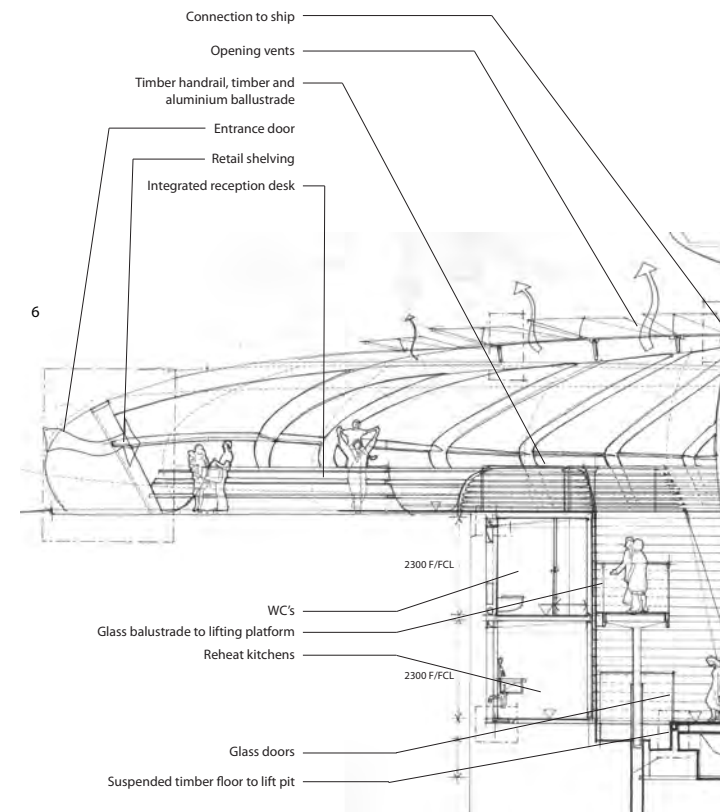
4

Illustrations

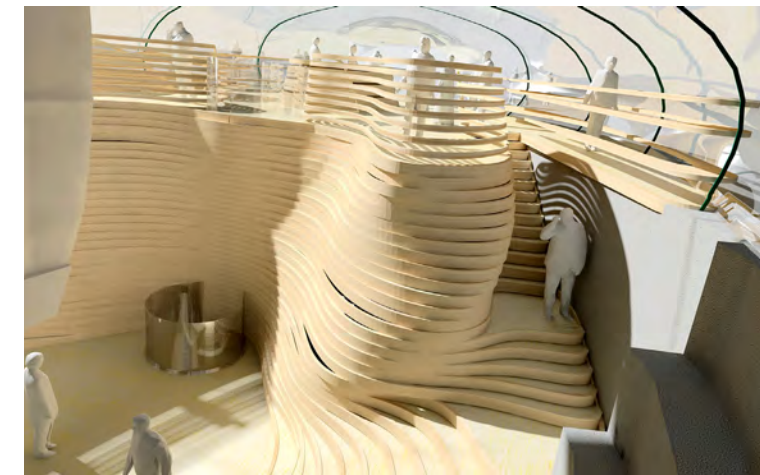
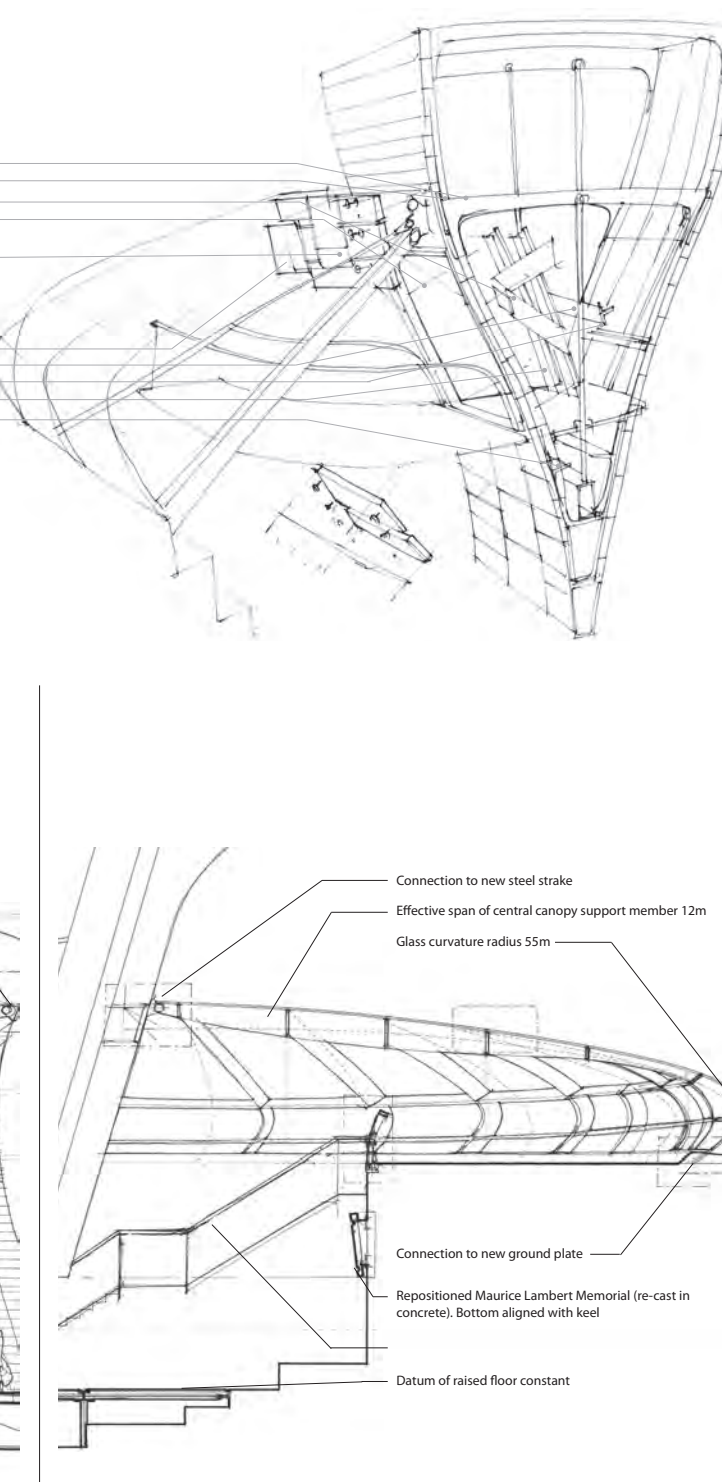
- 1/ Exploded component perspective seen from the dry berth
- 2/ Section illustrating the new supporting structure
- 3/ Perspective of the stern
- 4/ View of the proposed entrance at the bow of the ship



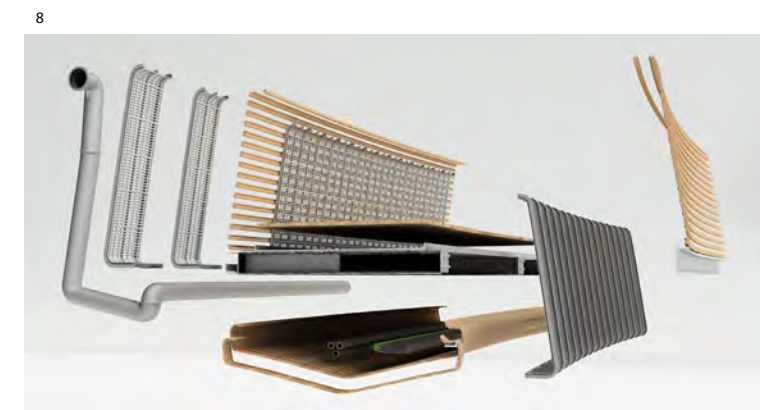
5



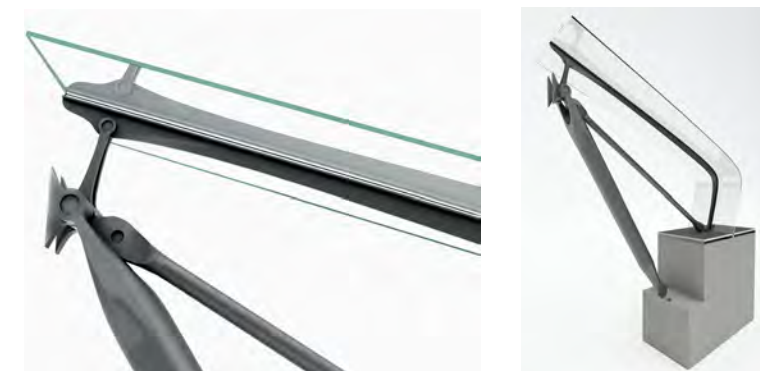
6



7



8



Illustrations

- 5/ Early conceptual study of the proposed visitor entrance
- 6/ Bow and stern sectional elevations illustrating key components
- 7/ Entrance service pod conceptual study
- 8/ Components of the proposed entrance gangway
- 9/ Details of proposed supporting cradle members and glazing components