

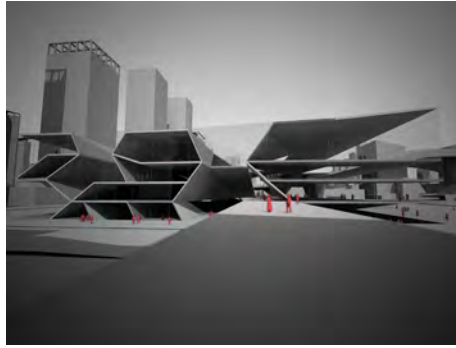
027.0/ MOCAPE

01 Description

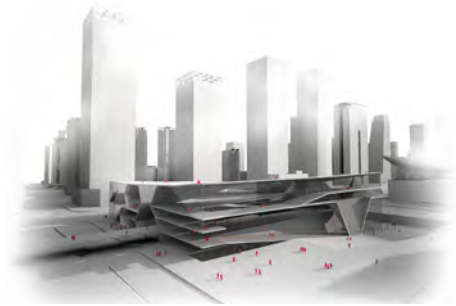
Client: Shenzhen Municipality
Date: June 2007
Status: Competition design

Timber is used as an ecological structural system and as the traditional building material of the area. The museum will be constructed from solid timber panels, these are fabricated off site and quickly pieced together on site.

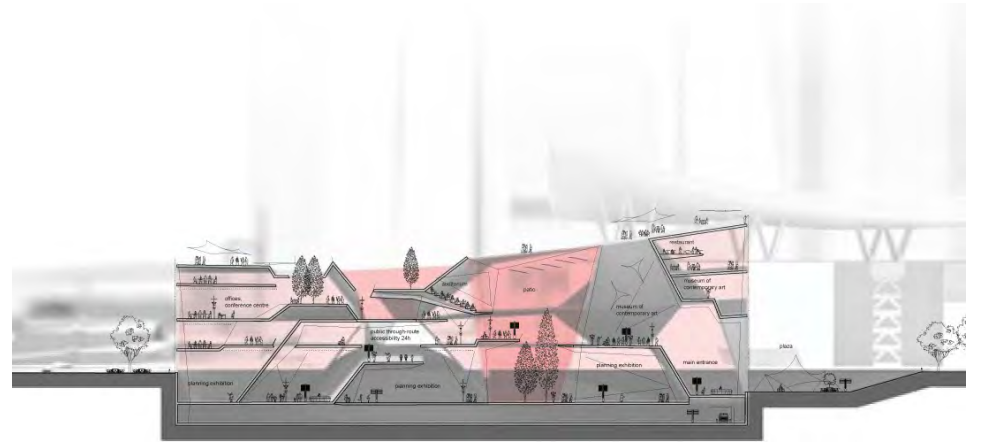
The geometry is based on faceted surfaces to ensure economic construction. Exhibition spaces are designed to form routes instead of rooms, the individual spaces can be combined depending on the exhibition requirements.



1



2



3

Illustrations

- 1/ Sectional perspective
- 2/ View from the city
- 3/ Organisational section
- 4/ Aerial perspective

